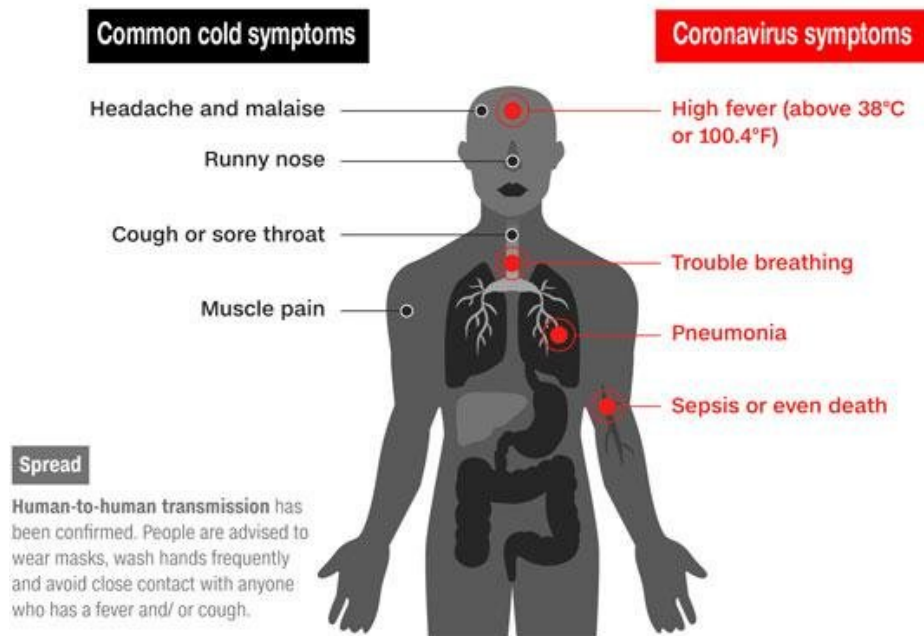


Coronaviruses are a family of infections that include the common cold, and viruses such as SARS and MERS



It is transmitted both in droplets of cough when standing less than 6ft (2 meters) away, and in the stool.

Typically, the time from infection to the time of developing symptoms, known as the incubation period, is 5 days but there are reports of incubation period of 28 days. This means a person can carry the virus and infect others while not knowing that they themselves have been infected. Asymptomatic transmission can happen which makes this virus harder to contain.